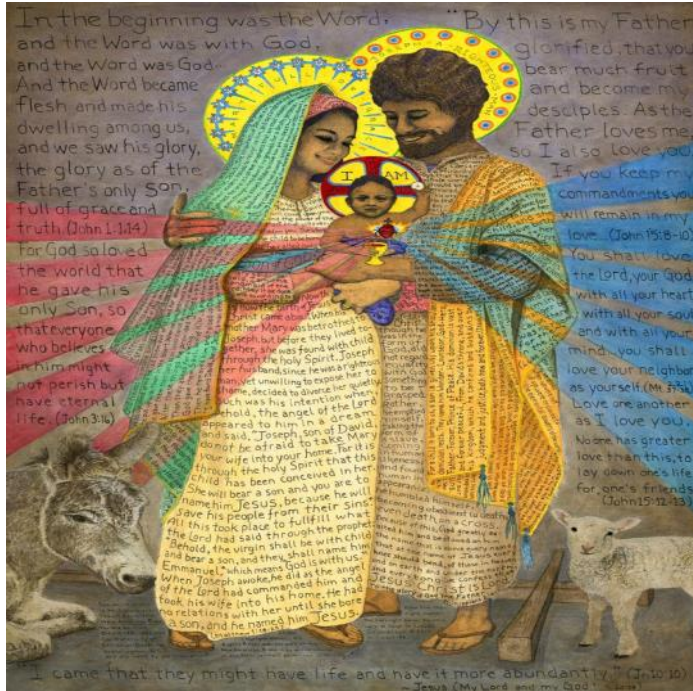


DECEMBER 26, 2021  
FIRST SUNDAY OF CHRISTMAS  
11:00AM — SANCTUARY



Pencil and Watercolor, 2017  
Lucas Southerton



FIRST PRESBYTERIAN CHURCH  
WEST WAYNE STREET

## WELCOME TO FIRST PRESBYTERIAN CHURCH!

We're so glad that you are here! If you would like to learn more about us, please fill out the information on the Get Connected card in the pew rack and place it in the offering plate. You are also more than welcome to contact any of our pastors over the phone or by email. God's peace to you today. — Rev. Dr. Anne Epling, Rev. Dr. Youngsoo An, Rev. Ann Pitman and Rev. Carrie Winebrenner

†*Those who are able, please stand*

*Congregation responds in bold*

### GATHERING

**PRELUDE** What Is This Lovely Fragrance?  
O Come, All Ye Faithful

Healey Willan  
Noel Rawsthorne

### TOLLING OF THE HOUR

### WELCOME

### CALL TO WORSHIP

Unto us a child is born, unto us a son is given!

**God has brought light into every darkness.**

The promises of God are fulfilled! Wonderful Counselor! Mighty God! Everlasting Father!  
Prince of Peace!

**We hear, even today, a chorus of angels bringing good news of great joy to all the people.**

We have lit our candles as a witness to the Savior who is Christ the Lord.

**Glory to God in the highest heaven, and on earth peace among those whom he favors.**

†**HYMN NO. 143** Angels, from the Realms of Glory

REGENT SQUARE

### †CALL TO CONFESSION

Even on the day after Christmas, we're reminded of the normalcy of life. But we don't want to go there just yet. We want to linger in the warmth of the season. Join me as we confess our reticence and reluctance to God.

### †PRAYER OF CONFESSION

Forgive us, Lord, when we don't seem to feel your warmth in our lives all the time.

Forgive us when we assign warmth only to Christmas. Give us courage to live as people of the Light, as those who find your comforting, encouraging presence in our lives at all times. Amen.

### †WORDS OF ASSURANCE

People of God, feel the presence of God right now, in this place, warming your hearts and forgiving your fears. In the name of Jesus Christ, you are beloved and forgiven. Amen.

†SHARING THE PEACE OF CHRIST

The peace of Christ be with you.

And also with you.

†RESPONSIVE HYMN NO. 141 On This Day Earth Shall Ring

PERSONENT HODIE

1. On this day earth shall ring with the song;  
2. On this day an-gels sing; with their song;

chil-dren sing to the Lord, Christ our King, born on earth to save us;  
earth shall ring, prais-ing Christ, heav-en's King, born on earth to save us;

**Refrain**  
him and the Fa-ther he gave us. Id-e-o-o-o-o, id-e-o-o-o-

o-o, id-e-o-glo-ri-a in-ex-cel-sis De-o!

HEARING THE WORD

PRAYER FOR ILLUMINATION

GOSPEL READING

John 1:1-14

This is the Word of the Lord.

Thanks be to God!

SOLO Rocking Carol

Traditional Czech Carol

*Quinton Davis, Tenor*

*Little Jesus, sweetly sleep, do not stir; we will lend a coat of fur.  
We will rock you, rock you, rock you, we will rock you, rock you, rock you:  
See the fur to keep you warm, snugly round your tiny form.*

*Mary's little baby, sleep, sweetly sleep, sleep in slumber, slumber deep.  
We will rock you, rock you, rock you, we will rock you, rock you, rock you:  
We will serve you all we can, darling, darling little man.*

SERMON

“So Now What?”

Rev. Dr. Annie Epling

## RESPONDING TO THE WORD

†HYMN NO. 145 What Child Is This

GREENSLEEVES

### ANNOUNCEMENTS

### PASTORAL PRAYER AND THE LORD'S PRAYER

Our Father, who art in heaven, hallowed be thy name, thy kingdom come, thy will be done, on earth as it is in heaven. Give us this day our daily bread; and forgive us our debts, as we forgive our debtors; and lead us not into temptation, but deliver us from evil. For thine is the kingdom, and the power, and the glory, forever. Amen.

### INVITATION TO THE OFFERING

OFFERTORY Still, Still, Still

Paul Manz

†DOXOLOGY HYMN NO. 127 Hark! The Herald Angels Sing WE'LL WALK IN THE LIGHT

1. Hark! the her - ald an - gels sing. Je - sus, the light of the world.  
2. Joy - ful all you na - tions, rise.

Glo - ry to the new - born King. Je - sus, the light of the world. We'll  
Join the tri - umph of the skies.

walk in the light, beau - ti - ful light. Come where the dew - drops of mer - cy shine  
bright. O, shine all a - round us by day and by night. Je - sus, the light of the world.

### †PRAYER OF DEDICATION

God of Vision, take these offerings of money and turn them into a vision; a vision of all people fed, a vision of all people safe, and a vision of all people housed. Amen.

## SENDING

†HYMN NO. 136 Go, Tell It on the Mountain

### †BENEDICTION

†POSTLUDE Chorale Prelude on *In Dulci Jubilo*, BWV 729

Johann Sebastian Bach

## SERVICE NOTES

Hymn 143: Angels, from the Realms of Glory — Text: Stanzas 1-3, James Montgomery, 1816, 1825; stanza 4, *Salisbury Hymn Book*, 1857. Music: Henry Thomas Smart, 1867. This familiar carol was first published as a poem in the Christmas Eve 1816 issue of a newspaper the author edited in Sheffield, England. The tune name celebrates the location of a prominent Presbyterian Church in London, sometimes called the “Presbyterian cathedral.”

Hymn 145: What Child Is This — Text: William Chatterton Dix, 1871. Music: English ballad, 16th century; arr. *Christmas Carols New and Old*, 1871. This Victorian text gains scope and power by having the original second halves of stanzas two and three restored. They give a stark forward glimpse of what lies ahead for this “babe, the son of Mary!” The tune is much older, dating from Tudor England.

Hymn 136: Go, Tell It on the Mountain — Text: African American spiritual; stanzas, John W. Work II, 1940. Music: African American spiritual; arr, John W. Work III, 1940; harm. Melva Wilson Costen, 1987. Like other material from oral tradition, 19th-century African American spirituals flourished without being written down. Their refrains were their most stable parts and narrative stanzas were often improvised to fit. These Nativity stanzas attempt to recall that tradition.

\*\*\*\*\*

## THE SESSION

Moderator: Rev. Dr. Anne B. Epling  
Clergy: Rev. Dr. Youngsoo An  
Treasurer: Steve Weissner  
Clerk of Session: Luci Foltz  
Assistant Clerk: Sally Swihart

| <u>CLASS OF 2022</u>  | <u>CLASS OF 2023</u>  | <u>CLASS OF 2024</u>   |
|---|---|--|
| Tim Byer<br>Antoinette Lee<br>Sondra Mergenthal<br>Laurie Satter<br>Tom Swihart | Nancy Bradtmiller<br>Bob Doerr<br>Carolyn Krebs<br>YuCha Riley<br>Mike Shim | Dick Florea<br>Terri Lindvall<br>Judy Mettler<br>Heidi Schulenberg<br>Jai Son Wyss |



## ASSISTING WITH WORSHIP THIS MORNING

**Greeters:** Carolyn Krebs and Antoinette Lee

**Ushers:** Anne Barnett, Dave Beer, Charlotte Epling, Dan Serban and Jerry Winters

**Director of Music Ministries & Organist:** Brent Neuenschwander

## PASTORS

**Rev. Dr. Anne Bain Epling** (she/her) (ext. 107)  
Pastor/Head of Staff  
aepling@firstpresfortwayne.org

**Rev. Dr. Youngsoo An** (he/him) (ext. 105)  
Associate Pastor/Korean Language Ministry  
ysan@firstpresfortwayne.org

**Rev. Ann Pitman** (she/her) (ext. 106)  
Parish Associate for Pastoral Care and  
Interim Director of Smock Senior Ministries Ctr  
apitman@firstpresfortwayne.org

**Rev. Carrie Winebrenner** (she/her) (ext. 112)  
Resident Pastor  
cwinebrenner@firstpresfortwayne.org

**Prayer List or to Request Pastoral Care:** If you or a loved one is hospitalized and would like to be added to the prayer list or are seeking pastoral care, please contact the church at 260-426-7421 x106. Please let us know if you would like a visit.

## CHILDCARE

Childcare is available in Room 101 for age 5 and under.

## ANNOUNCEMENTS FOR DECEMBER 26, 2021

**Thank you for joining us today.** You are welcome to join us for worship and communion on Sunday, January 2, at 11:00am for the English in-person service in the Sanctuary (or via Live Stream, Facebook, Website or YouTube); or for the 11:00am Korean in-person service in McMillen Chapel (or via website or YouTube).

To use the “Hearing Loop” during the service, please switch your hearing aid or cochlear device to the “T”, T-Coil or telephone position. For questions, please call Bill Patterson at 260-609-9696.

**Potluck Brunch:** Join us for a festive potluck luncheon after **today’s** 11:00am service in McKay Hall. Everyone is welcome and encouraged to bring a favorite Christmas dish or pick up a dish from a store. We want to keep it simple! First Pres will provide the drinks. Come and celebrate Christmas with new and old friends.

### COMMITTEE EVENTS

**Nominating Committee:** The Nominating Committee is accepting nominations for church officers. If you are a member interested in serving as a Deacon, Elder or member of next year’s Nominating Committee or if you want to nominate another member for the same, please complete the Nomination Form that can be found on the table in front of the office or via the online Nomination Form in the E-News. Please prayerfully consider serving the church in one of these offices. The deadline for submissions has been extended to January 2, 2022. Contact Jiin Jung at [jjung@firstpresfortwayne.org](mailto:jjung@firstpresfortwayne.org) with any questions.

**Presbyterian Disaster Assistance:** PDA has reached out to the Presbytery of Western Kentucky after a devastating tornado ripped through the area overnight, killing more than 74 people. Please join us in praying for the community as search and rescue is still underway at this time. To support our response, gifts can be designated to the church website or pew envelopes note “PDA Relief”.

### ARTS AT FIRST PRES

**Glass by Hot Shop Valpo (Dave and Bryan Lee) and paintings by Maurice Papier:** Come and see these ethereal, colorful glassworks and paintings! Gallery hours are Monday-Thursday, 9:00am-5:00pm and Fridays, 9:00am-12:00pm and during all theater performances. Enjoy!

**Angel Collection:** Come and enjoy a Christmas treat — Kathy Beatty’s angel collection is in the McKay foyer display case.



## SMOCK SENIOR MINISTRIES

**FYI** — the 3B walking and exercise class activities are taking a break. 3B will resume on Monday, January 10, 2022.

### ON-LINE EVENTS

**Table Talk 1 (Women's Book Study) — Wednesdays @ 10:00am via Zoom:** Meeting ID: 241 730 827. Passcode: 2604267421. For more information, contact Marj Sapp at 260-413-2639 or Marcie Weissner at 260-312-5733. **FYI** – there will **not** be a Table Talk 1 study group on Wednesdays, December 29, 2021, or January 5, 2022.

**Men's Bible Study (all men invited!) — Fridays @ 10:00am via Zoom:** Join Meeting: <https://us06web.zoom.us/j/262564318?pwd=UldEa2ZVVmZjTk10YzV1b21adXJMZz09>. Meeting ID: 262 564 318. Passcode: 2604267421. Contact: Rev. Young Soo An at [ysan@firstpresfortwayne.org](mailto:ysan@firstpresfortwayne.org). **FYI** – there will **not** be a Men's Bible Study on Friday, December 31, 2021.

**Women's Bible Study — Fridays @ 1:00pm via Zoom:** Join Meeting: <https://zoom.us/j/904041033>. Call-in Number: 312-626-6799. Meeting ID: 904 041 033. Passcode: 2604267421. Contact: Rev. Ann Pitman, [apitman@firstpresfortwayne.org](mailto:apitman@firstpresfortwayne.org). **FYI** – there will **not** be a Women's Bible Study on Friday, December 31, 2021.

### ADDITIONAL NOTES

**New COVID Protocols:** First Pres is implementing new COVID protocols which are: (1) Masks are required when in the building, including for staff and Day School teachers; (2) People are required to wear masks (vaccinated or not) on Sunday mornings until they get to their pew – at that time, they can remove their masks; and (3) Social distance will be kept in the sanctuary; people should only sit in a pew where the door is open. These protocols are in place until Sunday, January 16, 2022, and will be extended, if necessary. Thank you for your cooperation.

**Wired Word Recess:** Please note that Wired Word will **not** meet **today**, Sunday, December 26, 2021, or Sunday, January 2, 2022, due to the Christmas and New Year holidays. Classes will resume on January 9, 2022.

**Faith, Fibers & Fellowship:** FFF will **not** meet on Mondays, December 27, 2021, or January 3, 2022, due to the Christmas and New Year holidays.

**Stephen Ministry Leaders:** SML will **not** meet on Thursday, December 30, 2021.

**Hospital Stays:** With the increased concerns over patient's privacy, hospitals are very limited in what information they can release to churches. When you are admitted to the hospital, please ask someone to notify the church office so that our pastors can provide appropriate care.

**Pledges and Offerings:** We invite you to mail in pledges and offerings to First Presbyterian Church, 300 West Wayne Street, Fort Wayne, IN 46802 or go online and give at [www.firstpresfortwayne.org](http://www.firstpresfortwayne.org), where you can also find updated information on our events. Thank you for your gifts!

## **CHURCH OFFICE HOURS**

*Monday-Thursday, 9:00am — 5:00pm*

*Fridays, 9:00am — 12:00pm*

**Phone:** 260-426-7421, *press 5 for the Staff Directory*

Visit our **website:** [www.firstpresfortwayne.org](http://www.firstpresfortwayne.org)

**Watch the livestream of our worship services each Sunday  
by going to our Webpage or Facebook page.**

For sermons, go to the **Resources** link, select **Sermons**

Like us on **Facebook:** [www.facebook.com/firstpresfortwayne](http://www.facebook.com/firstpresfortwayne)

Follow us on **Instagram:** firstpres\_ftw

**To Submit both Announcements and E-news Material:**

Email Jiin Jung, [jjung@firstpresfortwayne.org](mailto:jjung@firstpresfortwayne.org)

One License A-708176 for print, streaming and podcast.

Glory to God: The Presbyterian Hymnal Online.

## HERE IS WHAT'S HAPPENING AT FIRST PRES THIS WEEK!

*Office Hours: Monday-Thursday, 9:00am — 5:00pm and Fridays, 9:00am — 12:00pm*

### **SUNDAY, DECEMBER 26, 2021**

10:30am Childcare, Rm 101  
 11:00am English Worship Service, SC  
 11:00am Korean Worship Service, CH  
 11:00am KLM Kids Worship Ministry, CL  
 12:15pm Potluck Brunch, MH

### **MONDAY, DECEMBER 27, 2021 — CHRISTMAS HOLIDAY OBSERVED & CAMPUS IS CLOSED**

5:30pm St. Joseph Women's Shelter Meal, OS

### **TUESDAY, DECEMBER 28, 2021**

*No events.*

### **WEDNESDAY, DECEMBER 29, 2021**

*No events.*

### **THURSDAY, DECEMBER 30, 2021**

*No events.*

### **FRIDAY, DECEMBER 31, 2021 — NEW YEARS EVE!**

5:00pm KLM New Year Worship & Fellowship, CH

### **SATURDAY, JANUARY 1, 2022 — NEW YEAR DAY!**

*No events*

### **SUNDAY, JANUARY 2, 2022**

10:30am Childcare, Rm 101  
 11:00am English Worship Service, SC  
 11:00am Korean Worship Service, CH  
 11:00am KLM Kids Worship Ministry, CL

### ROOM ABBREVIATIONS

|    |                 |      |                   |      |                         |
|----|-----------------|------|-------------------|------|-------------------------|
| CH | Chapel          | MH/E | McKay Hall East   | SDR  | Small Dining Room       |
| CL | Chapel Lounge   | MH/W | McKay Hall West   | SM/O | Stephen Ministry Office |
| CN | Chapel Narthex  | MR   | Music Room        | SR   | Session Room            |
| CY | Courtyard       | NP   | North Parking Lot | TH   | Theater                 |
| FH | Fellowship Hall | NX   | Narthex           | YL   | Youth Lounge            |
| FO | Front Office    | NR   | Nursery           | ZM   | Zoom                    |
| GL | Gallery         | OS   | Offsite           |      |                         |
| KT | Kitchen         | PR   | Parlor            |      |                         |
| MF | McKay Foyer     | SB   | Sanctuary Balcony |      |                         |
| MH | McKay Hall      | SC   | Sanctuary         |      |                         |

*Please stop by the Church Office with any questions or to learn how to get connected to church events.*